



# Теплообменники COREVA FУС-UУС

## Технические характеристики

### По вопросам продаж и поддержки обращайтесь:

Архангельск (8182)63-90-72

Астана +7(7172)727-132

Белгород (4722)40-23-64

Брянск (4832)59-03-52

Владивосток (423)249-28-31

Волгоград (844)278-03-48

Вологда (8172)26-41-59

Воронеж (473)204-51-73

Екатеринбург (343)384-55-89

Иваново (4932)77-34-06

Ижевск (3412)26-03-58

Казань (843)206-01-48

Калининград (4012)72-03-81

Калуга (4842)92-23-67

Кемерово (3842)65-04-62

Киров (8332)68-02-04

Краснодар (861)203-40-90

Красноярск (391)204-63-61

Курск (4712)77-13-04

Липецк (4742)52-20-81

Магнитогорск (3519)55-03-13

Москва (495)268-04-70

Мурманск (8152)59-64-93

Набережные Челны (8552)20-53-41

Нижний Новгород (831)429-08-12

Новокузнецк (3843)20-46-81

Новосибирск (383)227-86-73

Орел (4862)44-53-42

Оренбург (3532)37-68-04

Пенза (8412)22-31-16

Пермь (342)205-81-47

Ростов-на-Дону (863)308-18-15

Рязань (4912)46-61-64

Самара (846)206-03-16

Санкт-Петербург (812)309-46-40

Саратов (845)249-38-78

Смоленск (4812)29-41-54

Сочи (862)225-72-31

Ставрополь (8652)20-65-13

Тверь (4822)63-31-35

Томск (3822)98-41-53

Тула (4872)74-02-29

Тюмень (3452)66-21-18

Ульяновск (8422)24-23-59

Уфа (347)229-48-12

Челябинск (351)202-03-61

Череповец (8202)49-02-64

Ярославль (4852)69-52-93

сайт: [www.ciat.nt-rt.ru](http://www.ciat.nt-rt.ru) | эл. почта: [cta@nt-rt.ru](mailto:cta@nt-rt.ru)



# Shell and tubes dry expansion evaporator

Improve heat *exchanges*  
with high-efficiency tubes

*Quality refrigerating* components

Range of *optimised* devices



Cooling capacity : 100 to 2000 kW

COREVA FYC - UYC

## USE

This generation of shell and tubes evaporator has been designed for integration into high and medium power cooling systems.

## DESCRIPTION

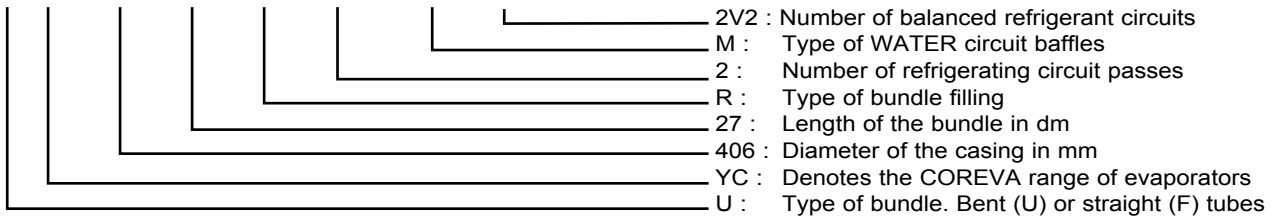
### FYC - UYC

To be used with all halogenised, zeotrope or azeotrope refrigerant fluids (R507, R134a, R404A, R407C...).

The bundle tubes are of copper.

## DESCRIPTION

**U YC 406 27 R 2 M 2V2**



## QUICK SELECTION

Air conditioning Fluid temperature: 37°C R134a > 3° Water 12/7°C					Refrigeration Fluid temperature: 30°C R404a > -13°C MEG 30% -4/-8°C				
Power kW		Model	Water flow	pressure drop	Power kW		Model	MEG flow rate 30%	pressure drop
200	FYC	273 20C 2B	34	24	200	FYC	273 20C 2B	47	50
300		323 24C 2B	51	38	300		273 30C 2B	70	77
450		406 20N 2M	77	22	450		406 20N 2M	106	48
600	UYC	406 27R 2B	103	68	600	UYC	457 27N 2H	141	69
750		457 27N 2H	129	50	750		457 27R 2M	176	55
900		457 33R 2M	154	52	900		508 27N 2M	211	50
1100		508 33R 2B	189	37	1050		508 33R 2B	246	68

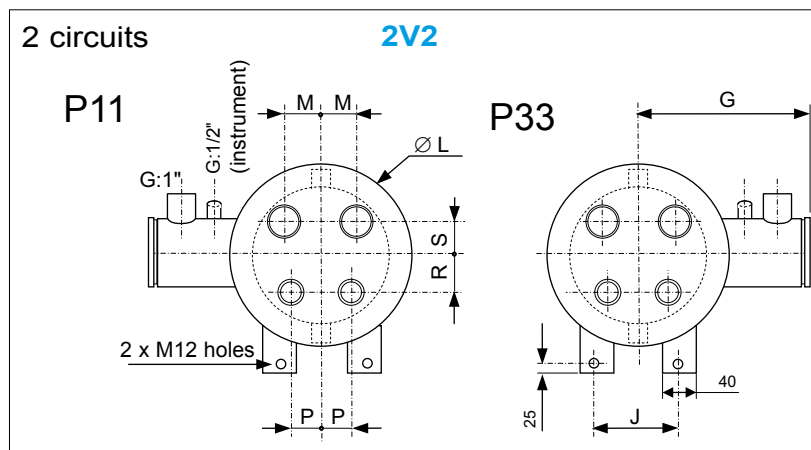
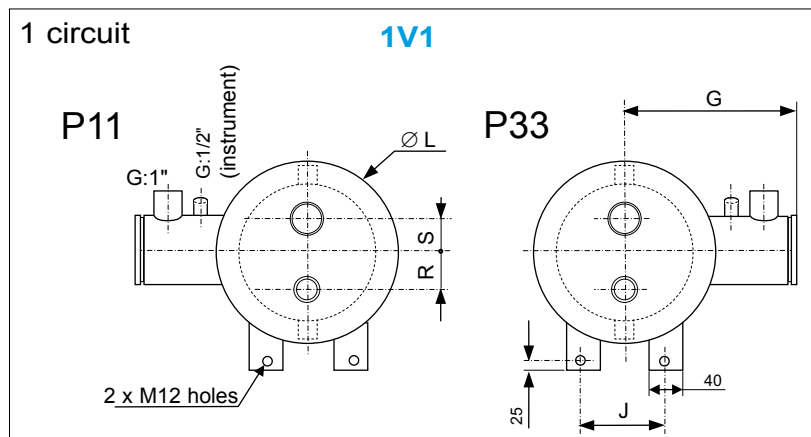
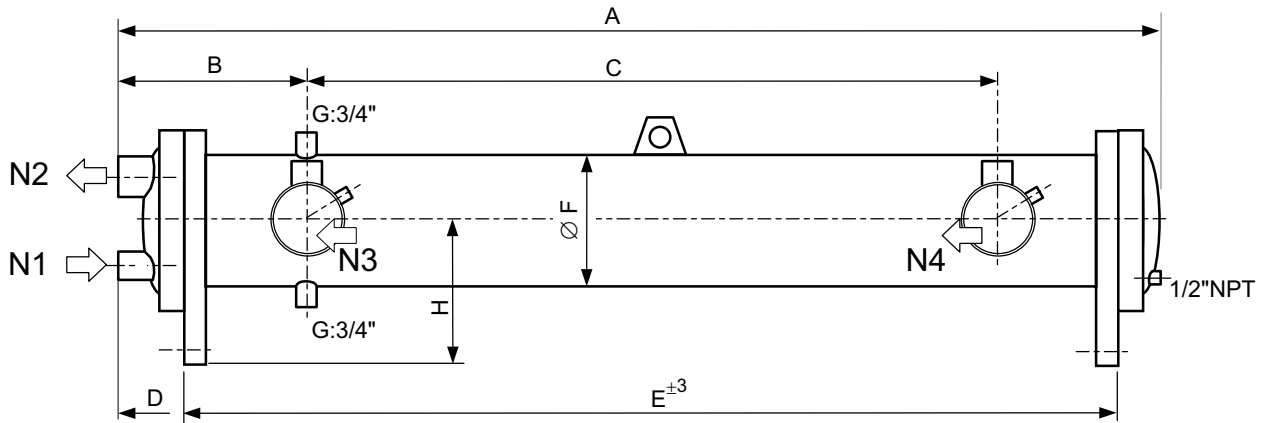
**N.B.** : The lubrication oil must be PERFECTLY MISCIBLE with the refrigerant fluid for the mentioned nominal conditions



# Shell and tubes dry expansion evaporator

## COREVA FYC - UYC

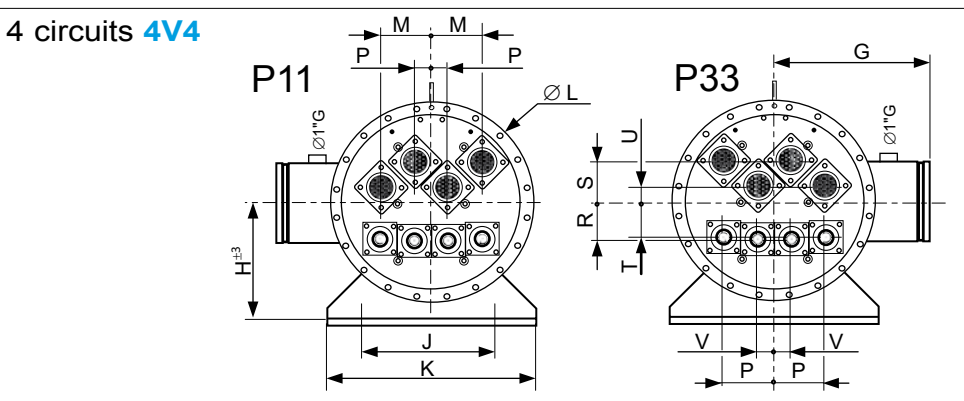
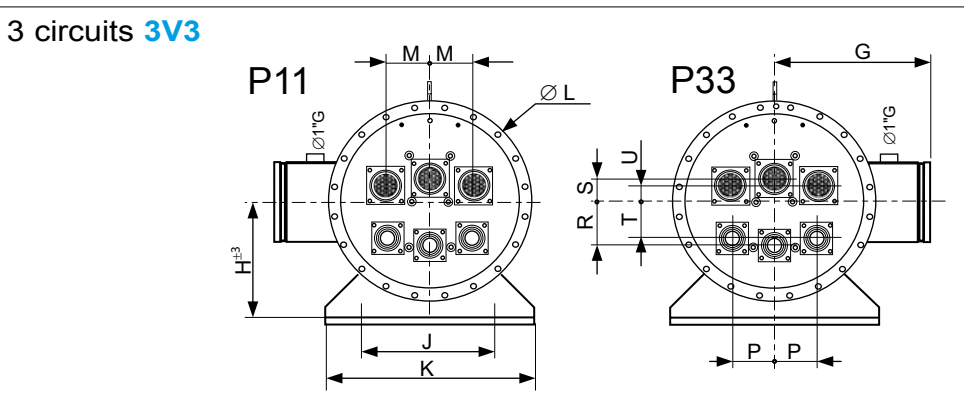
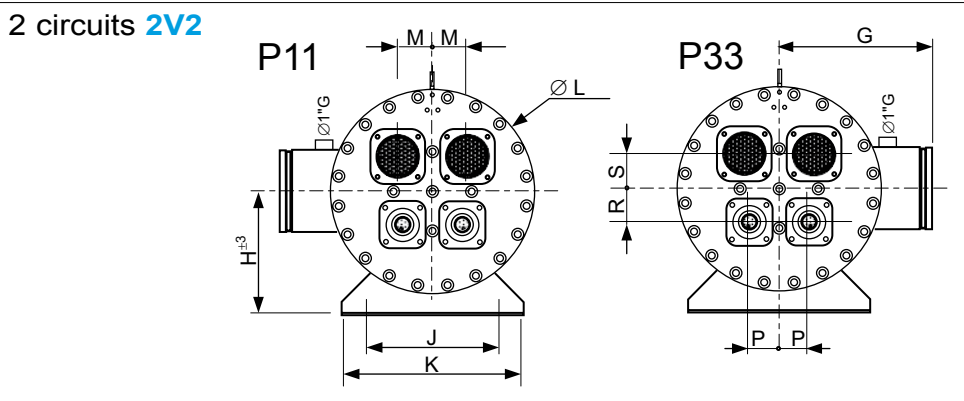
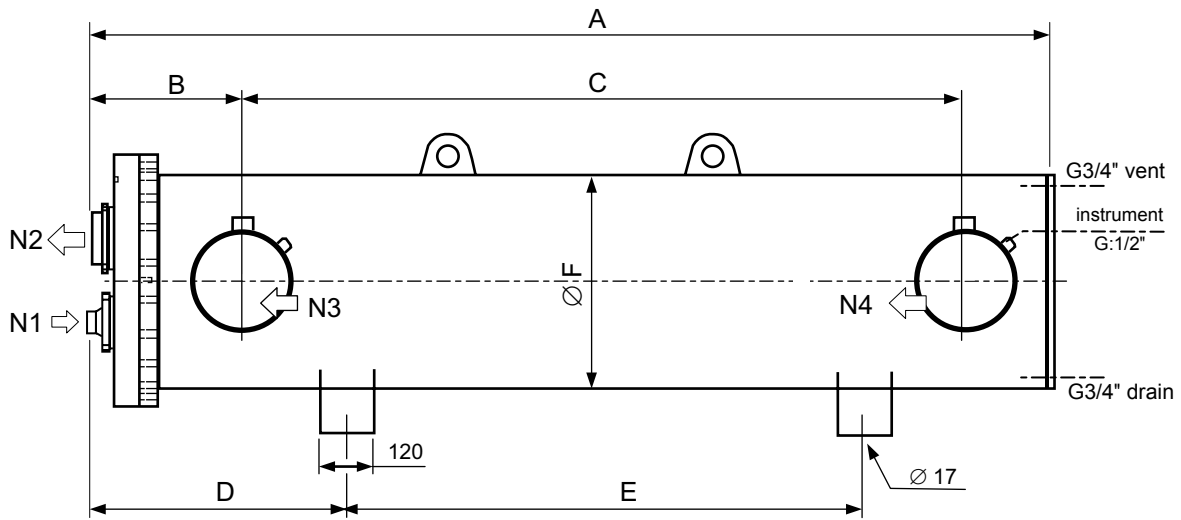
### DIMENSIONS FYC





# Shell and tubes dry expansion evaporator

## DIMENSIONS UYC





# Shell and tubes dry expansion evaporator

## COREVA FYC - UYC

### CAPACITIES – WEIGHTS – CONNECTIONS

Vi = content of the refrigerating circuit in litres  
Ve = content of the water circuit in litres  
M = empty weight in kg

N1, N2 = Refrigerating circuit connections. Sleeves to be welded.  
N3, N4 = WATER circuit connections. Smooth tubes for Victaulic® type hinged couplings.

Models FYC		1C1					2C2										N3-N4
		Vi	Ve	M	N1	N2	Vi	Ve	M	N1	N2						
219	20C	28	40	170	1"5/8	2"5/8	28	40	170	1"3/8	1"5/8						DN100
	24C	33	48	190	1"5/8	2"5/8	33	48	190	1"3/8	1"5/8						DN100
	30C	40	58	230	1"5/8	2"5/8	40	58	230	1"3/8	1"5/8						DN100
273	20C	48	60	205	1"5/8	2"5/8	48	60	212	1"3/8	2"5/8						DN125
	24C	56	72	240	1"5/8	2"5/8	56	72	245	1"3/8	2"5/8						DN125
	30C	69	89	290	1"5/8	2"5/8	69	89	290	1"3/8	2"5/8						DN125
323	24C	79	98	405	2"5/8	4"1/8	79	98	375	1"5/8	3"1/8						DN150
	30C	94	122	482	2"5/8	4"1/8	94	122	451	1"5/8	3"1/8						DN150

Models UYC		2V2					3V3					4V4					N3-N4
		Vi	Ve	M	N1	N2	Vi	Ve	M	N1	N2	Vi	Ve	M	N1	N2	
406	20U	58	188	419	2"1/8	2"5/8											DN150
	27U	77	239	500	2"1/8	2"5/8											DN150
	20N	77	166	456	2"1/8	2"5/8											DN150
	27N	102	209	550	2"1/8	2"5/8											DN150
	20R	92	149	484	2"1/8	2"5/8	83	159	472	1"5/8	2"1/8	90	151	486	1"5/8	2"1/8	DN150
	27R	121	187	588	2"1/8	2"5/8	110	212	577	1"5/8	2"1/8	118	202	595	1"5/8	2"1/8	DN150
457	27U	101	323	610	1"5/8	4"1/8											DN200
	33U	121	391	710	1"5/8	4"1/8											DN200
	27N	131	287	670	1"5/8	4"1/8											DN200
	33N	158	348	780	1"5/8	4"1/8											DN200
	27R	156	257	720	1"5/8	4"1/8	148	265	704	2"1/8	2"5/8	149	246	707	1"5/8	2"1/8	DN200
	33R	189	311	840	1"5/8	4"1/8	179	229	823	2"1/8	2"5/8	180	320	826	1"5/8	2"1/8	DN200
508	27U	138	392	682	1"5/8	4"1/8											DN200
	33U	166	474	796	1"5/8	4"1/8											DN200
	27N	181	342	765	1"5/8	4"1/8											DN200
	33N	217	414	896	1"5/8	4"1/8											DN200
	27R	198	320	801	1"5/8	4"1/8	180	340	768	2"1/8	2"5/8	185	338	777	1"5/8	2"5/8	DN200
	33R	238	387	939	1"5/8	4"1/8	218	296	900	2"1/8	2"5/8	223	405	910	1"5/8	2"5/8	DN200



# Shell and tubes dry expansion evaporator

## DIMENSIONS FYC - UYC

Models	A	B	C	D	E	F	G	H	J	K	L
219 20	2152	230	1750	105	2000	219	245	180	130		276
219 24	2552	230	2150	105	2400	219	245	180	130		276
219 30	3152	230	2750	105	3000	219	245	180	130		276
273 20	2120	212	1730	135	2000	273	280	210	130		330
273 24	2520	212	2130	135	2400	273	280	210	130		330
273 30	3120	212	2730	135	3000	273	280	210	130		330
323 24	2543	245	2090	135	2400	323	300	235	180		380
323 30	3143	245	2690	135	3000	323	300	235	180		380
406 20	2362	289	1891	554	1319	406	376	376	230	300	492
406 27	3062	289	2591	554	2019	406	376	376	230	300	492
457 27	3096	335	2565	561	2125	457	410	335	400	490	525
457 33	3696	335	3165	561	2725	457	410	335	400	490	525
508 27	3124	335	2565	561	2125	508	455	335	500	590	575
508 33	3724	335	3165	561	2725	508	455	335	500	590	575

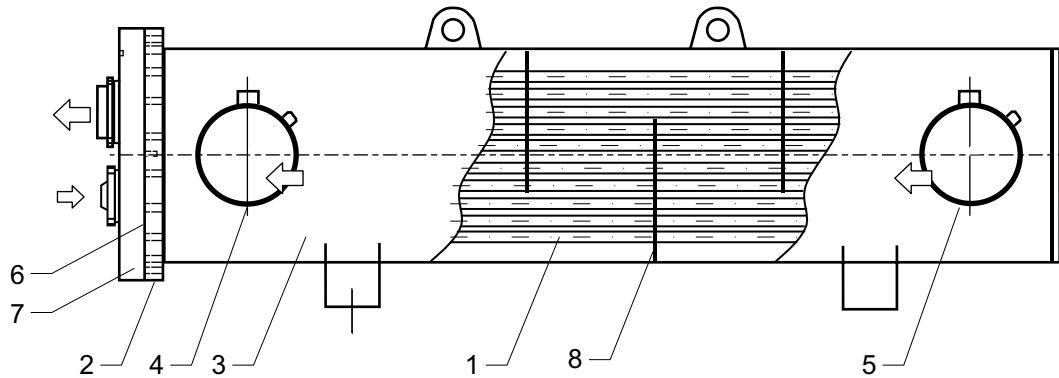
Models		M	P	R	S	T	U	V
219	1C1			60	50			
	2C2	45	40	50	37			
273	1C1			70	55			
	2C2	60	55	70	55			
323	1C1			75	65			
	2C2	65	60	75	65			
406	2V2	80	70	90	70			
	3V3	113	97	90	50	90	60	
	4V4	120	128	110	107	80	40	38
457	2V2	93	80	90	93			
	3V3	119	108	105	67	90	46	
	4V4	133	134	106	100	90	42	42
508	2V2	110	90	100	110			
	3V3	125	120	125	65	105	48	
	4V4	142	143	105	118	100	47	47



# Shell and tubes dry expansion evaporator

## COREVA FYC - UYC

### TECHNICAL DATA



(1) High performance bundles of expanded tubes on tubular steel plate(s) (2).

(3) Casing equipped with :

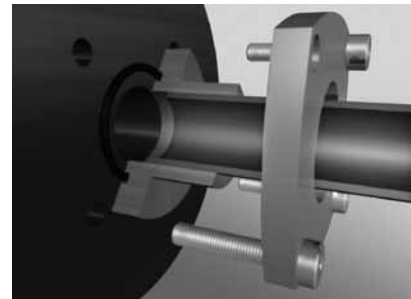
- Intake/outlet tubing for the tube outdoor circuit (4)/(5), smooth tubes for Victaulic® coupling, each equipped with a 1/2" sleeve and a 1" sleeve for the instrumentation
- 3/4" bleed and tube outdoor circuit drain sleeves on the casing (FYC range) or on the rear buffer (UYC range).
- Support feet

(6) Unit gasket.

(7) Power supply unit equipped with:

- For FYC, sleeves to be brazed.
- For UYC, a collet/flange system to be brazed (see illustration).

(8) Anti-corrosion baffles.



### OPERATING LIMITS

Unit	Circuit inside core		Circuit outside core	
	Coolant	PS	Liquid	PS
<b>FYC</b>	-30 / 50°C	<b>20 b</b>	-20 / 50°C	<b>10 b</b>
<b>UYC</b>	-30 / 50°C		-20 / 50°C	

PS : Maximum allowable pressure



**По вопросам продаж и поддержки обращайтесь:**

Архангельск (8182)63-90-72

Астана +7(7172)727-132

Белгород (4722)40-23-64

Брянск (4832)59-03-52

Владивосток (423)249-28-31

Волгоград (844)278-03-48

Вологда (8172)26-41-59

Воронеж (473)204-51-73

Екатеринбург (343)384-55-89

Иваново (4932)77-34-06

Ижевск (3412)26-03-58

Казань (843)206-01-48

Калининград (4012)72-03-81

Калуга (4842)92-23-67

Кемерово (3842)65-04-62

Киров (8332)68-02-04

Краснодар (861)203-40-90

Красноярск (391)204-63-61

Курск (4712)77-13-04

Липецк (4742)52-20-81

Магнитогорск (3519)55-03-13

Москва (495)268-04-70

Мурманск (8152)59-64-93

Набережные Челны (8552)20-53-41

Нижний Новгород (831)429-08-12

Новокузнецк (3843)20-46-81

Новосибирск (383)227-86-73

Орел (4862)44-53-42

Оренбург (3532)37-68-04

Пенза (8412)22-31-16

Пермь (342)205-81-47

Ростов-на-Дону (863)308-18-15

Рязань (4912)46-61-64

Самара (846)206-03-16

Санкт-Петербург (812)309-46-40

Саратов (845)249-38-78

Смоленск (4812)29-41-54

Сочи (862)225-72-31

Ставрополь (8652)20-65-13

Тверь (4822)63-31-35

Томск (3822)98-41-53

Тула (4872)74-02-29

Тюмень (3452)66-21-18

Ульяновск (8422)24-23-59

Уфа (347)229-48-12

Челябинск (351)202-03-61

Череповец (8202)49-02-64

Ярославль (4852)69-52-93

**сайт: [www.ciat.nt-rt.ru](http://www.ciat.nt-rt.ru) | эл. почта: [cta@nt-rt.ru](mailto:cta@nt-rt.ru)**